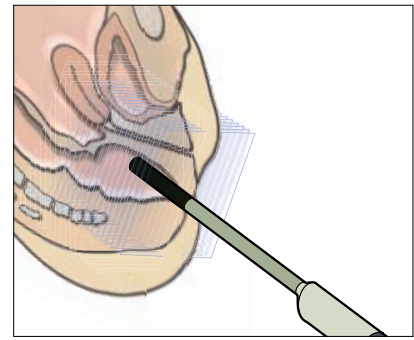


■ Change the way  
you practice

*and the way you see pelvic floor dysfunction*



Pelvic floor **ultrasound** imaging  
the complete solution

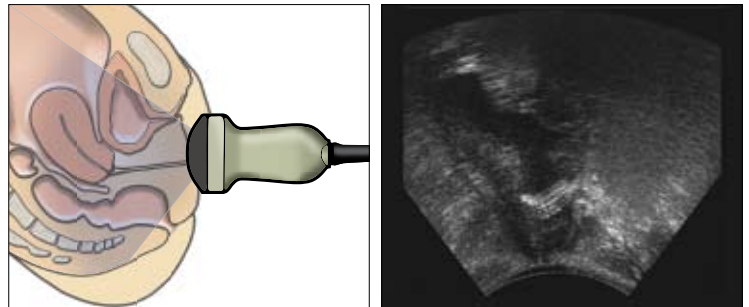
# ■ Get the complete story

## Incontinence and prolapse

### ■ A quick and easy transperineal overview with the 8802

Get a quick overview of:

- urethral hypermobility
- cystocele
- rectocele
- obstructed defecation

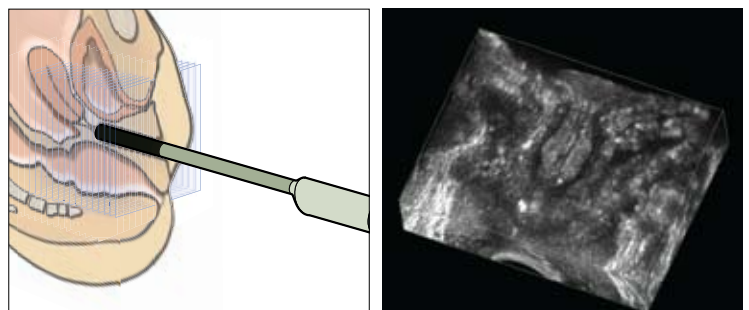


*Transperineal scan with clear visualization of tape.*

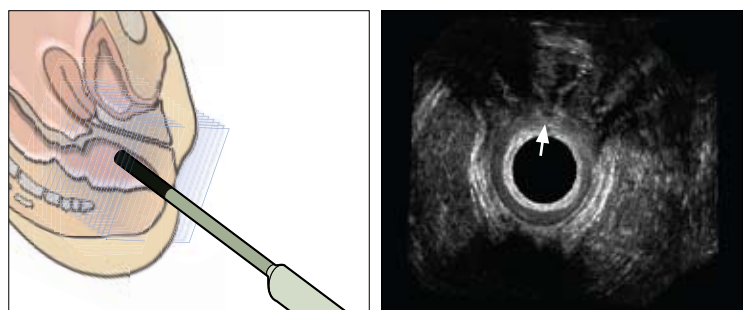
### ■ Visualize complex pelvic floor structures endoanally and endovaginally with the 2052

Scan, store and compare detailed anatomic information in precise high-resolution 3D data cubes.

- Evaluate and measure structures accurately in any plane within the data cube.
- Manipulate the cube for full structural detail according to their most spatially accurate plane of incidence in the pelvic floor.
- Confirm overall position of tapes and meshes in visual detail.
- Evaluate the structural integrity of the anal canal.
- Follow fistula paths in precise detail.



*Coronal view of the female urethra with high resolution 3D and the 2052 transducer.*



*Endovaginal scan showing ano-vaginal fistula at 12:00.*

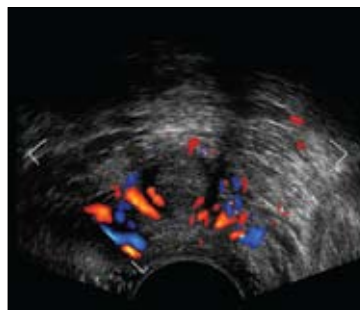
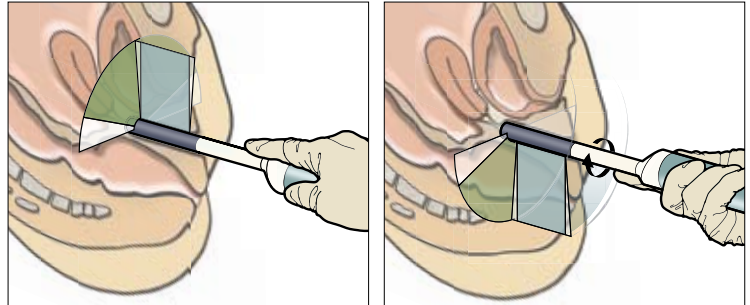
# ■ Evaluate all factors

Anatomy, function and vascularity

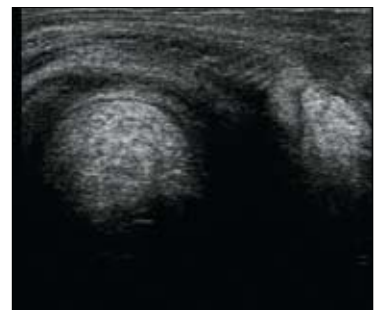
## ■ Dynamic transvaginal imaging with the 8848

Study the anterior and posterior compartments in 2D and/or 3D for important anatomic, vascular and functional details.

- See the bladderneck, urethra and surrounding structures of the anterior compartment.
- Assess vessels surrounding the urethra and structures for potential ischemia with Doppler.
- View tapes and meshes in 2D/3D.
- Confirm defects including enterocele, rectocele and obstructed defecation with functional study.
- Visualize hemorrhoids from posterior view.
- Reproduce 3D studies easily.



*Endovaginal transverse scan revealing high vascularity around the urethra.*



*Endovaginal scan during squeeze, showing anal canal, pubo-rectalis and perineal body.*



*BK Medical's multi-compartment ultrasound solution – to completely image the pelvic floor for the cause and effect of pelvic floor dysfunction and evaluate treatment outcomes.*

**We specialize because you do**

With more than 30 years of commitment to ultrasound innovation, BK Medical specializes in the development of dedicated ultrasound solutions. We offer the largest selection of application-specific transducers.

**Passionately innovative**

BK Medical is the creator of state-of-the art technologies including 360° scanning with 3D, compact surgical transducers with simultaneous biplane, and triplane imaging of the prostate. Ongoing collaboration with top clinical specialists allows us to continue to develop tools needed to work confidently and effectively with ultrasound. By partnering with BK Medical, you stay on top of advances in your clinical field.

**Learn more at [www.bkmed.com](http://www.bkmed.com)**

Find information about the Pro Focus UltraView solution that is right for you.



**World Headquarters**

Mileparken 34 · DK-2730 · Herlev · Denmark

Tel: +45 4452 8100 · Fax: +45 4452 8199 · [www.bkmed.com](http://www.bkmed.com)

*A wholly owned subsidiary of Analogic Corporation*